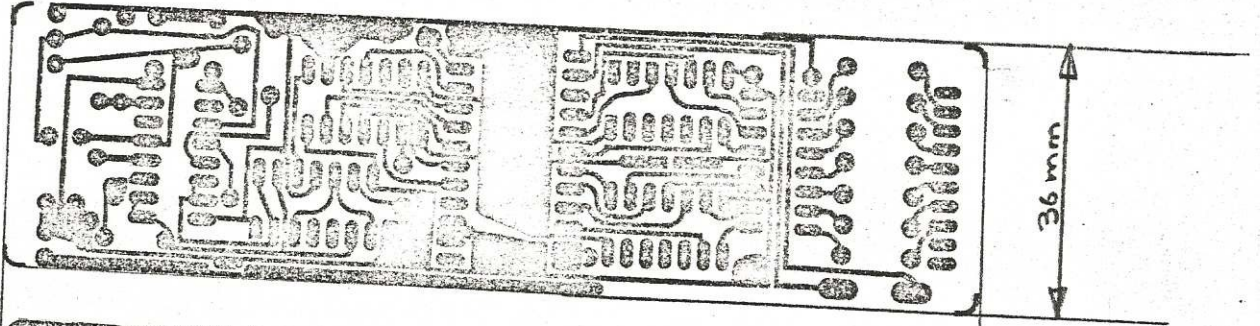
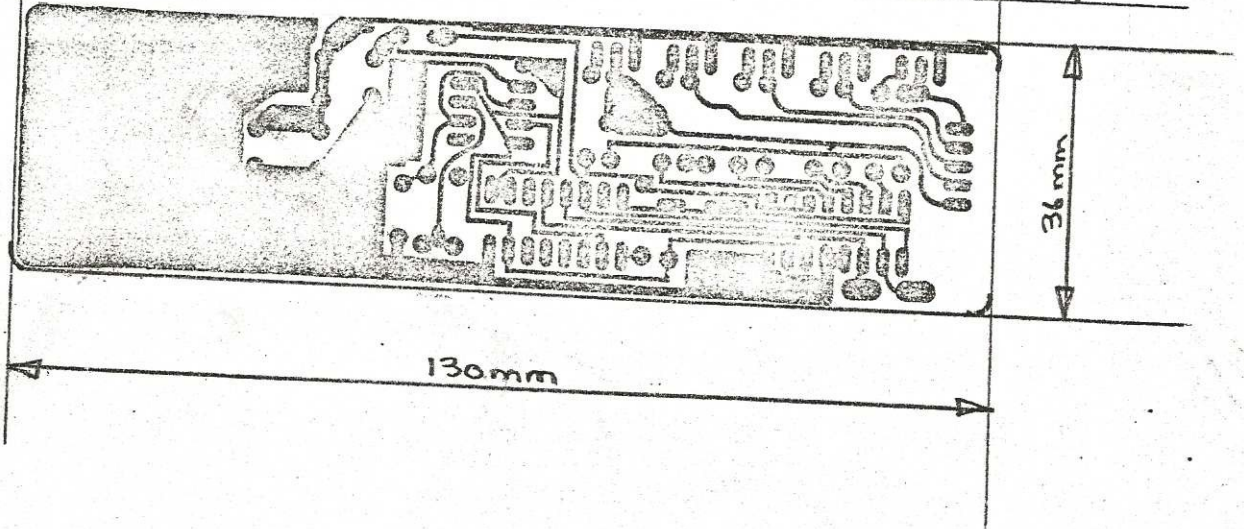


THIS SIDE UP

No.1



No.2



INSTRUCTIONS

- ① FILE DOWN TO DIMENSIONS STATED ABOVE.  
TAKE CARE NOT TO SCRATCH PATTERN SIDE OF BOARD.
- ③ ALL HOLES 1mm DIA.

INSTALL COMPONENTS AS SHOWN ON PROTOTYPE

R <sub>1</sub> , R <sub>2</sub> , R <sub>3</sub> , R <sub>4</sub>	120Ω	
R <sub>5</sub> , R <sub>6</sub>	560Ω	
R <sub>7</sub> , R <sub>8</sub> , R <sub>9</sub>	1KΩ	<u>DO NOT INSTALL R<sub>7</sub></u>
R <sub>10</sub>	6.8K	
R <sub>11</sub> , R <sub>12</sub> , R <sub>13</sub> , R <sub>14</sub> , R <sub>15</sub>	220Ω	
R <sub>16</sub> , R <sub>17</sub> , R <sub>18</sub> , R <sub>19</sub> , R <sub>20</sub> , R <sub>21</sub> , R <sub>22</sub>	15Ω	
R <sub>23</sub> , R <sub>24</sub> , R <sub>25</sub> , R <sub>26</sub> , R <sub>27</sub>	10KΩ	

CAPACITORS

C <sub>1</sub> , C <sub>2</sub>	10nF POLYCARBONATE
C <sub>3</sub>	0.1μF POLYCARBONATE

TRANSISTORS

TR <sub>1</sub> , TR <sub>2</sub> , TR <sub>3</sub> , TR <sub>4</sub> , TR <sub>5</sub>	BDX 45
---	--------

LINKS

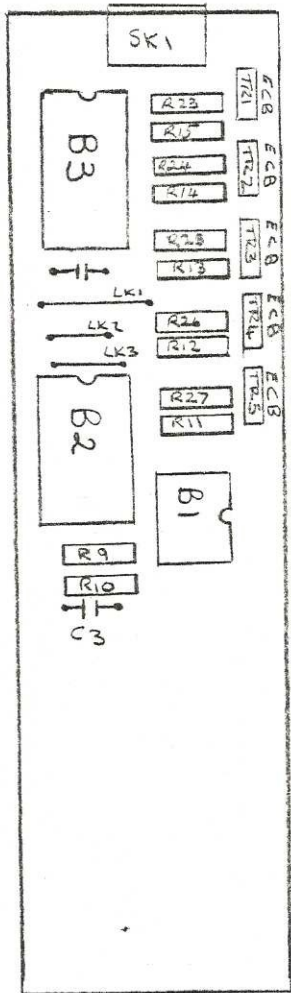
LK <sub>1</sub> , LK <sub>2</sub> , LK <sub>3</sub> , LK <sub>4</sub> , LK <sub>5</sub>	0.6mm SINGLE CORE WIRE RS. 355 331
LINKS BETWEEN BOARDS (AS ON PROTOTYPE)	RS. 434 188 P.C. CONNECTOR CONTACTS

INTEGRATED CIRCUIT SOCKETS

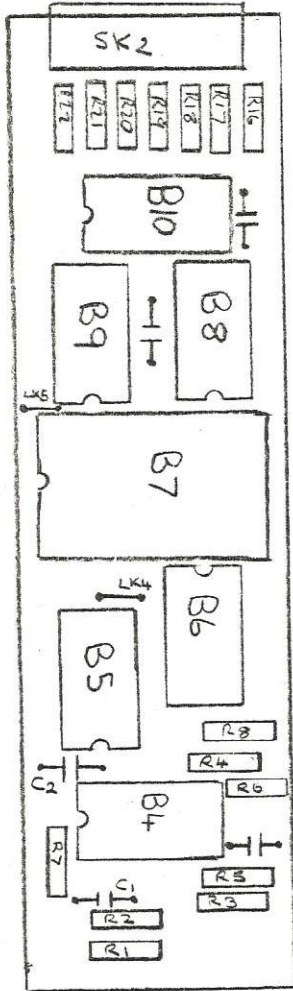
B <sub>1</sub>	8 PIN	
B <sub>5</sub> , B <sub>6</sub> , B <sub>8</sub> , B <sub>9</sub>	14 PIN	<u>INSERT SOCKETS AS SHOWN ON PROTOTYPE</u>
B <sub>2</sub> , B <sub>3</sub> , B <sub>4</sub> , B <sub>10</sub>	16 PIN	
B <sub>7</sub>	24 PIN	

SOCKETS

SK1	5 PIN	RS 467 661
SK2	10 PIN	RS 467 677



No. 2



No. 1