

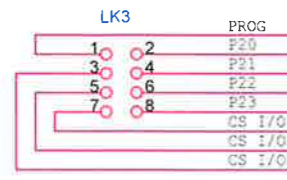
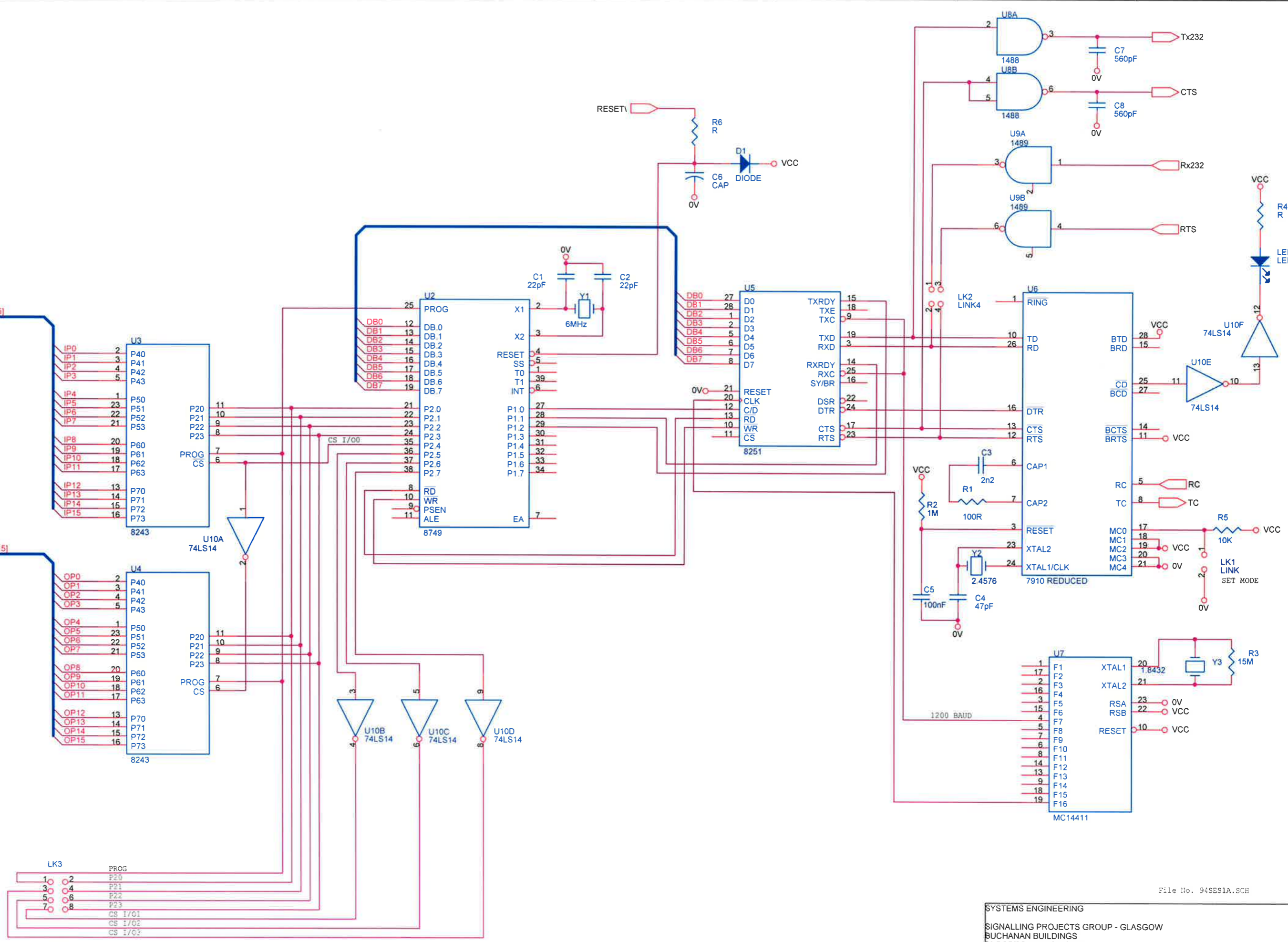
Single card TDM  
16 IN / 16 OUT

File No. 94SES1.SCH

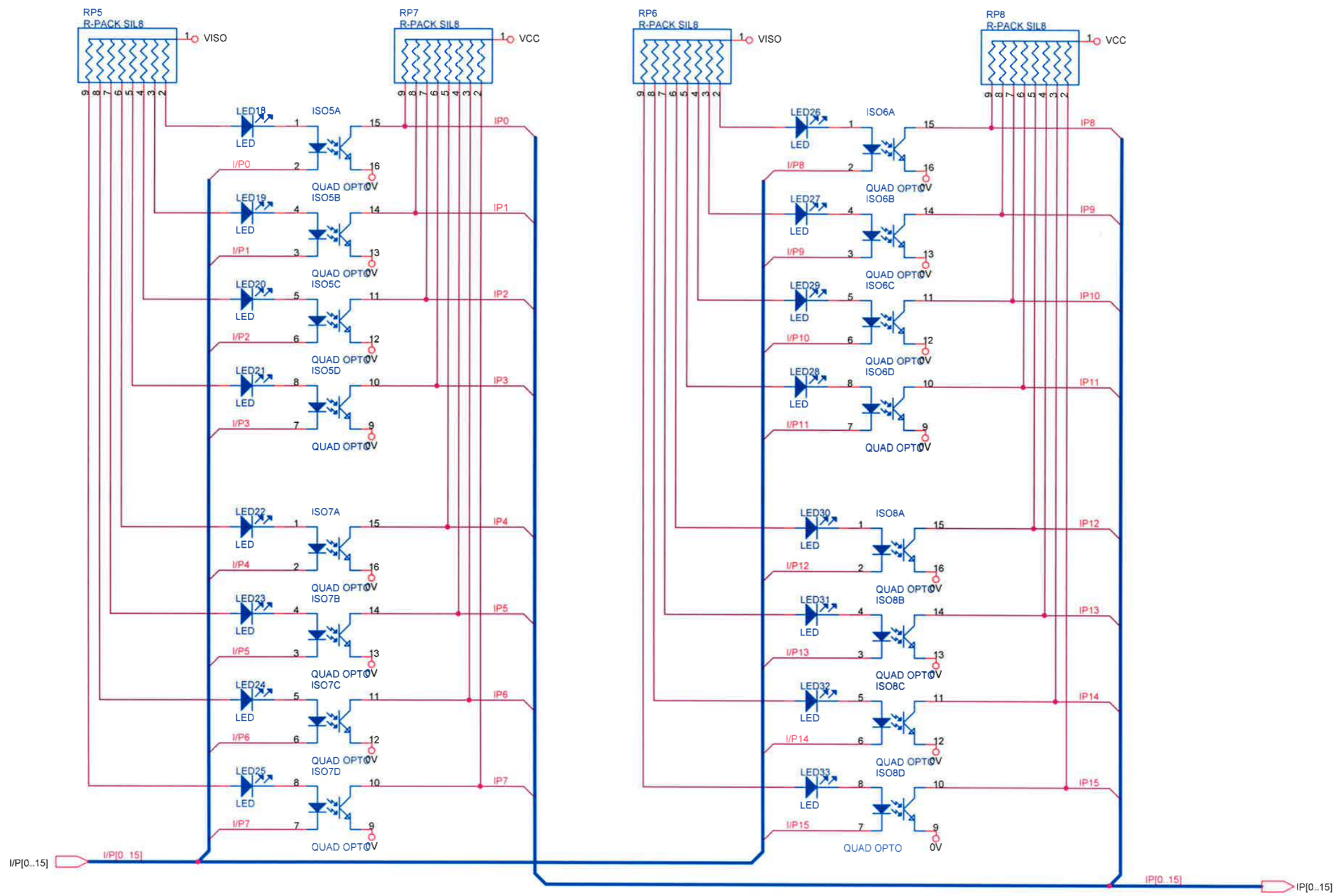
SYSTEMS ENGINEERING		
SIGNALLING PROJECTS GROUP - GLASGOW		
BUCHANAN BUILDINGS		
58 PORT DUNDAS ROAD		
GLASGOW G4 0HG		
Size	Document Number	Rev
B	94SES1	
Date:	Wednesday, November 01, 2006	Sheet 1 of 5

IP[0..15]

OP[0..15]

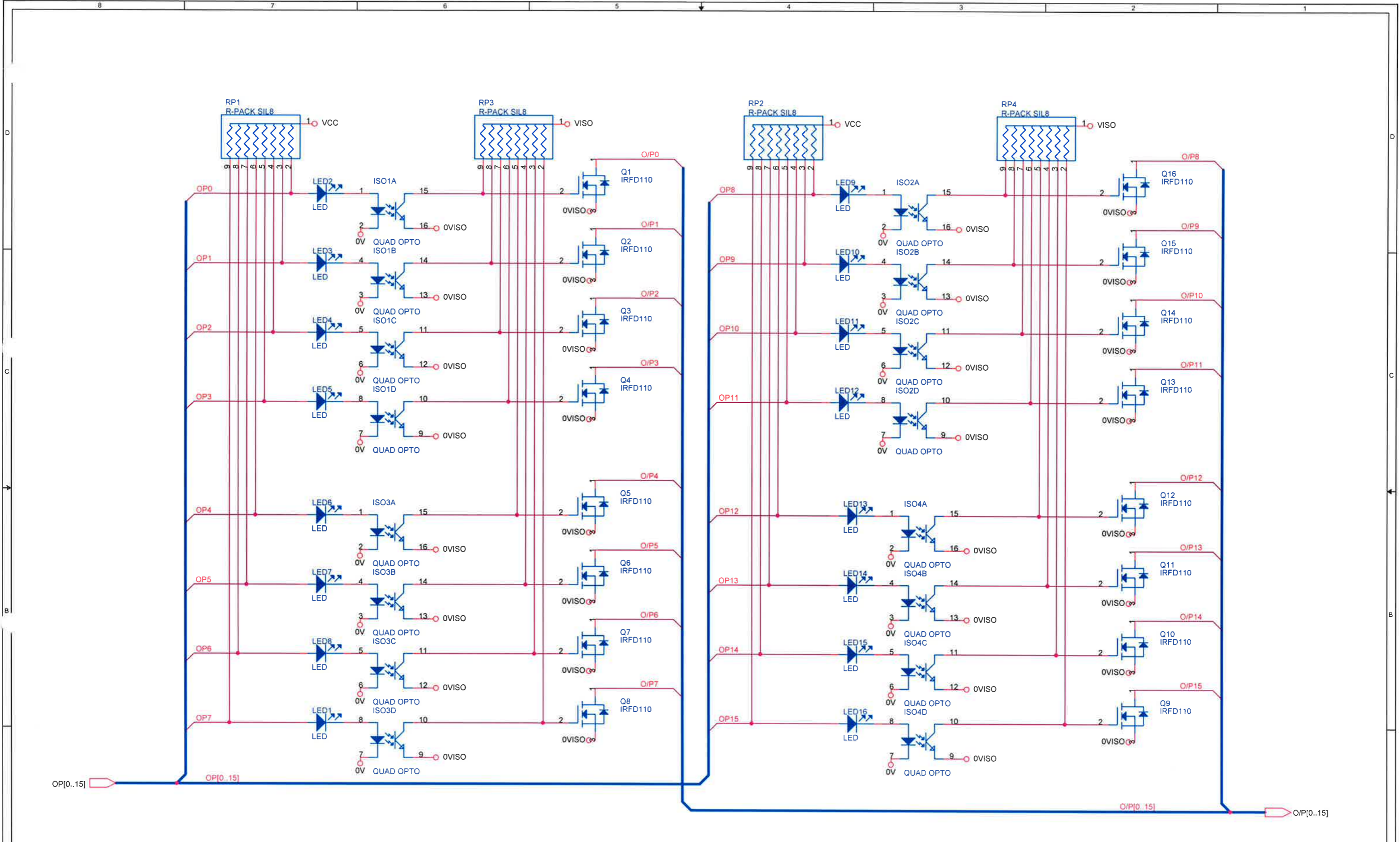


File No. 94SES1A.SCH



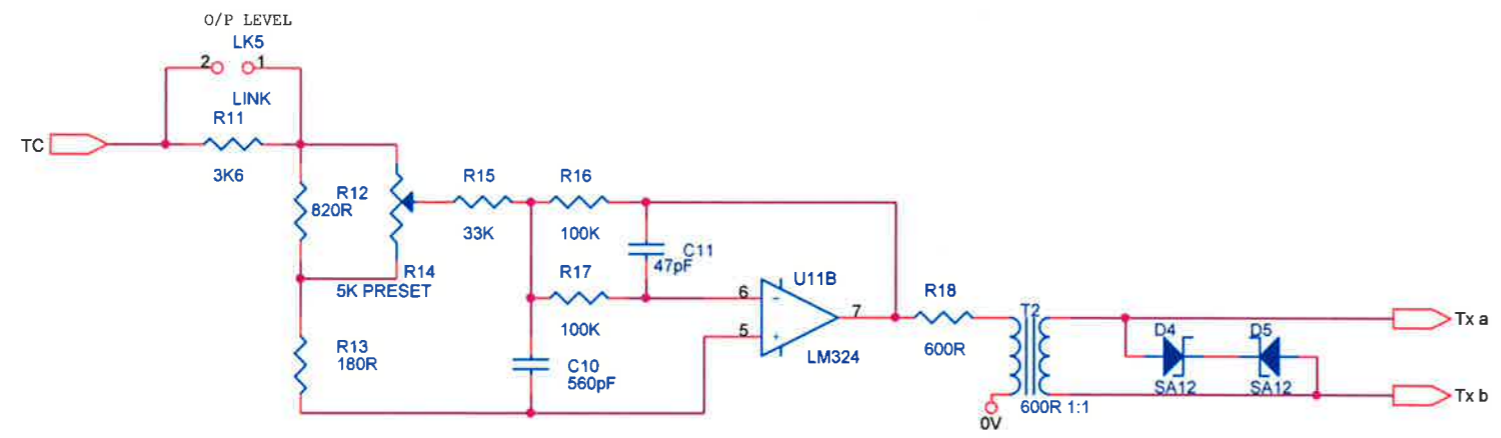
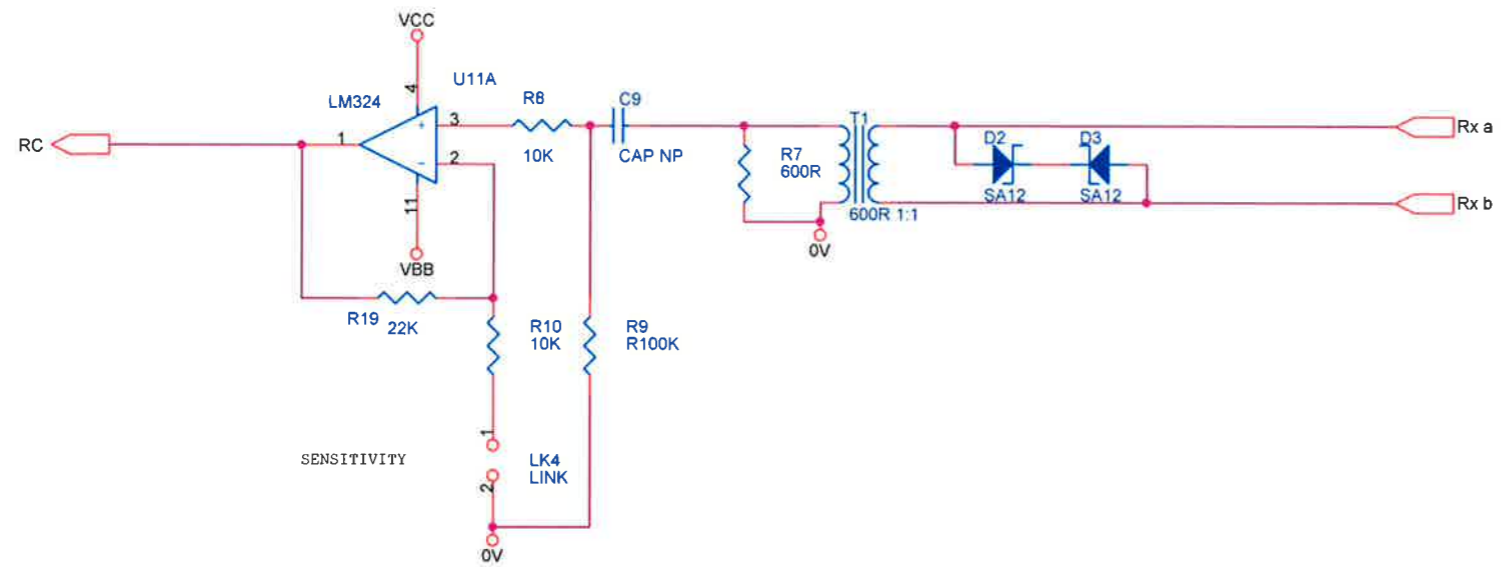
File No. 94SES1B.SCH

SYSTEMS ENGINEERING		
SIGNALLING PROJECTS GROUP - GLASGOW		
BUCHANAN BUILDINGS		
58 PORT DUNDAS ROAD		
GLASGOW G4 0HG		
Size	Document Number	Rev
B	94SES1	
Date	Wednesday, November 01, 2006	Sheet 4 of 5



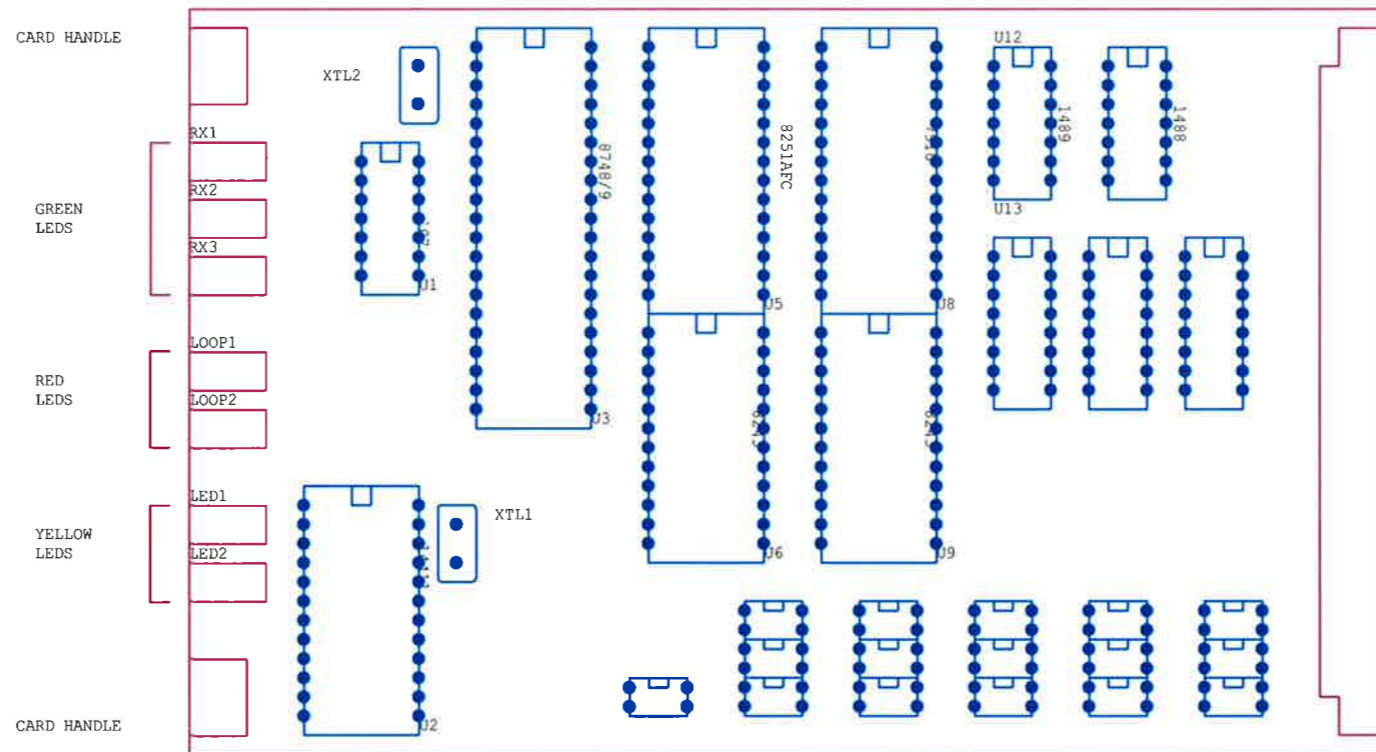
File No. 94SES1C.SCH

SYSTEMS ENGINEERING		
SIGNALLING PROJECTS GROUP - GLASGOW		
BUCHANAN BUILDINGS		
58 PORT DUNDAS ROAD		
GLASGOW G4 0HG		
Size	Document Number	Rev
B	94SES1	
Date:	Wednesday, November 01, 2006	Sheet 2 of 5



File No. 94SES1D.SCH

SYSTEMS ENGINEERING		
SIGNALLING PROJECTS GROUP - GLASGOW		
BUCHANAN BUILDINGS		
58 PORT DUNDAS ROAD		
GLASGOW G4 0HG		
Size B	Document Number 94SES1	Rev
Date: Wednesday, November 01, 2006	Sheet 5	of 5



NOTES:

- 1) Card handles to be BICC-Vero Type No.21-1888G (Flexible Card Handle)
- 2) Links and Jumpers to be wire-wrap posts on a 0.1" matrix (eg 3M BMIC 0.100" Header Pin Strip available from STC)
- 3) LED's to be Quality Technologies Flat Top rectangular, Type MV57123 etc., (STC 009884E)
- 4) JP23 Test Point to be RS 434-138

GLASGOW SIGNALLING PROJECTS GROUP

BUCHANAN BUILDINGS  
58 PORT DUNDAS ROAD  
GLASGOW G4 0HG

Title  
SYSTEMS ENGINEERING

Size  
B Document Number

Rev

Date: Wednesday, November 01, 2006 Sheet 0 of 0