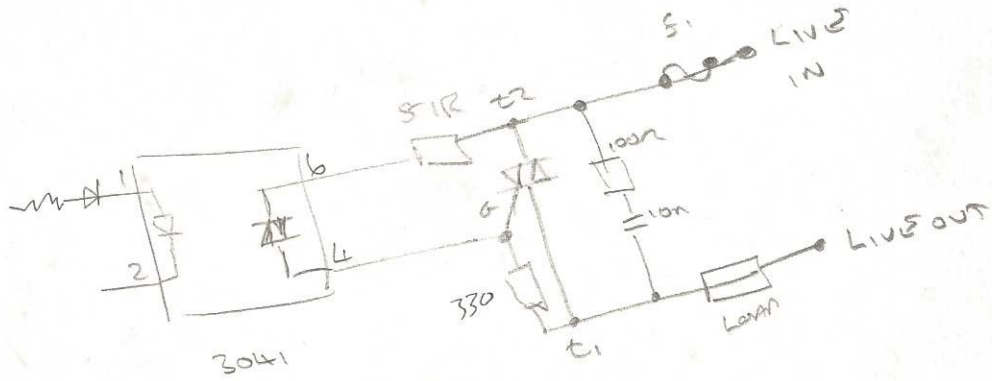
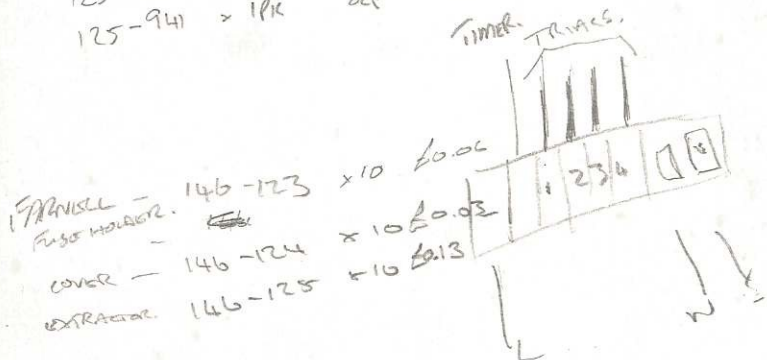


Callon.
 Power Supplies, $\pm 5V$ $\pm 12V$.
 METER



- 125-126-269 x 1PK ± 2.32 CAP. ✓
- 126-253 x 1PK ± 2.32 " ✓
- 125-660 x 1 \$ 1.08 " VAR. ✓
- 125-941 x 1PK 82R CAP 10M ✓

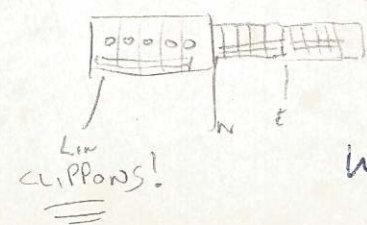


- 2 x 20w PBX Right angled Plug 467-344
- 2 x " " " " Socket 467-289
- 2 x 10w " " " " Plug. 467-330
- Socket. 467-273
- 308-304
- 115-130.

- PT72P - \$1.25
- FG84F - \$1.20.
- YF85V - \$1.09.
- FB11M - 8P.

700
 385
 315

1x 74LS241
 2x 470nF



2.50
 2.40
 1.09
 16
 6.18
 66.68

862960826